

Social Network Analysis

Jörg Cassens

Institut für Mathematik und Angewandte Informatik

Medieninformatik
WS 2017/2018



medieninformatik

IMI – Institut für
Mathematik und
Angewandte Informatik

Outline

The Problem

Foundations

Example

References

1 The Problem

2 Foundations

3 Example

4 References

TOP SECRET//SI//ORCON//NOFORN



Gmail facebook

Hotmail

YAHOO!

Google

skype

paltalk.com

YouTube

AOL mail

(TS//SI//NF) PRISM Collection Details



Current Providers

- Microsoft (Hotmail, etc.)
- Google
- Yahoo!
- Facebook
- PalTalk
- YouTube
- Skype
- AOL
- Apple



What Will You Receive in Collection
(Surveillance and Stored Comms)?

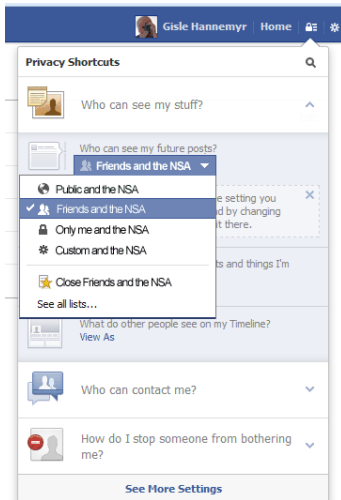
It varies by provider. In general:

- E-mail
- Chat – video, voice
- Videos
- Photos
- Stored data
- VoIP
- File transfers
- Video Conferencing
- Notifications of target activity – logins, etc.
- Online Social Networking details
- **Special Requests**

Complete list and details on PRISM web page:
Go PRISMFAA

TOP SECRET//SI//ORCON//NOFORN

Quelle: NSA



Twitter picture by Gisle Hannemyr: <http://v.gd/ysxDpw>

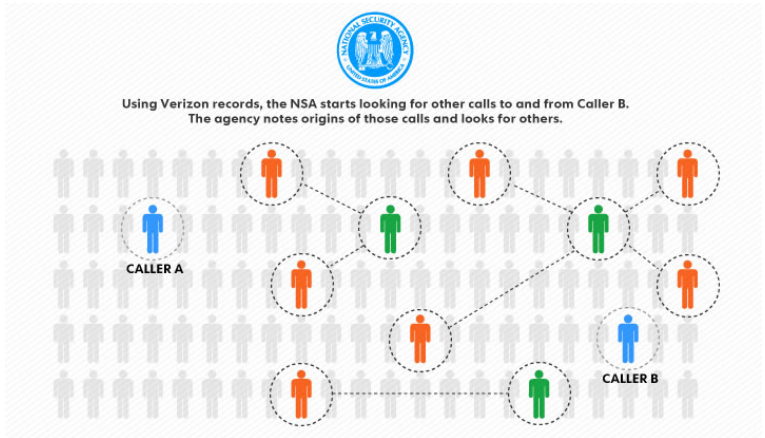
Metadata Analysis

The Problem

Foundations

Example

References



Quelle: USA Today

Outline

The Problem

Foundations

Example

References

1 The Problem

2 Foundations

3 Example

4 References

Social Networks

The Problem

Foundations

Example

References

- Social networks are networks of people or institutions and their connections
- Social networks can be seen as a means of recording and measuring the connections between people or institutions
- Different disciplines use different things to measure these connections
- E.g., in linguistics, researchers tend to use communicative traffic (that is what people say or do) to build social networks and they use these networks to get an idea of the options that people have for sharing meanings

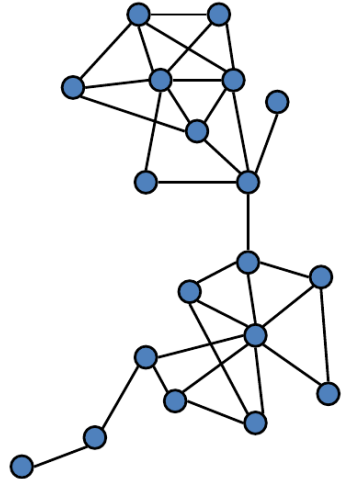
(Rebekah Wegener)

- **Density** (the number of connections)
- **Multiplexity** (the number of contexts they know each other from)
- **Directionality** (the dominant direction of communication)
- **Centrality** (the character who has the most connections)
- **Network Morphology** (the changing shape of the network i.e. are different parts quite different shapes?)

(Rebekah Wegener)

- **Actors / nodes / vertices / points**
 - Computers / Telephones
 - Persons / Employees
 - Companies / Business Units
 - Articles / Books
 - Can have properties (attributes)

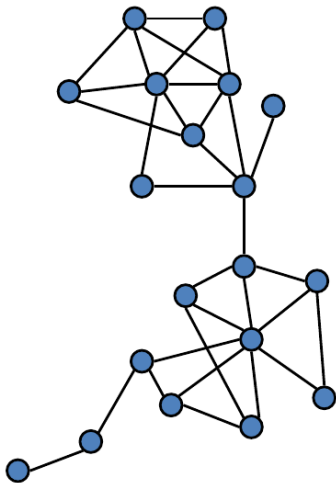
- **Ties / edges / arcs / lines / links**



(Johannes Putzke)

Vertices

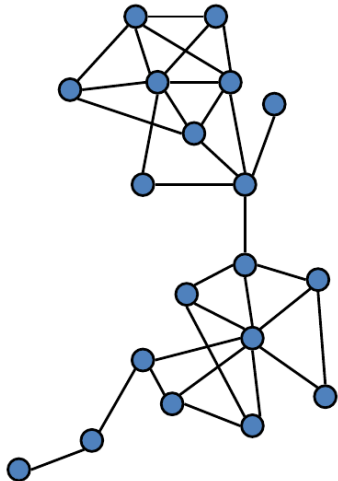
- Actors / nodes / vertices / points
- Ties / edges / arcs / lines / links
 - connect pair of actors
 - types of relations
 - friendship
 - acquaintance
 - kinship
 - advice
 - hindrance
 - sex
 - allow different kind of flows
 - messages
 - money
 - diseases



(Johannes Putzke)

Centrality Measures

- Who is the most prominent?
 - Who knows the most actors? (**Degree Centrality**)
 - Who has the shortest distance to the other actors? (**Closeness Centrality**)
 - Who controls knowledge flows? (**Betweenness Centrality**)
 - Who is in most shortest paths? (**Betweenness Centrality**)
 - ...



(Johannes Putzke)

Further Concepts

The Problem

Foundations

Example

References

- Strength of a tie
- Weight of a tie
- Directional or Non-Directional
- Reachability
- Cliques
- Groups

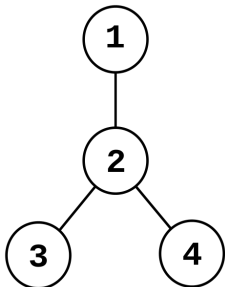
Adjacency Matrices

The Problem

Foundations

Example

References



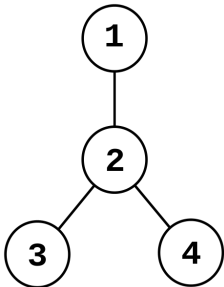
Adjacency Matrices

The Problem

Foundations

Example

References



	1	2	3	4
1	0	1	0	0
2	1	0	1	1
3	0	1	0	0
4	0	1	0	0

 Wikipedia

Outline

The Problem

Foundations

Example

References

1 The Problem

2 Foundations

3 Example

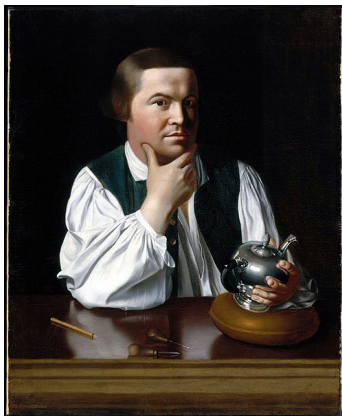
4 References

Paul Revere

Paul Revere was an American patriot in the American Revolution.

He is most famous for alerting Colonial militia of approaching British forces before the battles of Lexington and Concord.

Revere was a prosperous and prominent Boston silversmith, who helped organize an intelligence and alarm system to keep watch on the British military.



Portrait of Paul Revere by John Singleton Copley

Paraphrased from Wikipedia: <http://v.gd/V3WnrQ>

Example Analysis

The Problem

Foundations

Example

References

“Rest assured that we only collected metadata on these people, and no actual conversations were recorded or meetings transcribed. All I know is whether someone was a member of an organization or not. Surely this is but a small encroachment on the freedom of the Crown’s subjects. I have been asked, on the basis of this poor information, to present some names for our field agents in the Colonies to work with. It seems an unlikely task.”

🗉 Kieran Healy, Jun 9th, 2013

Organizations and Persons

The Problem

Foundations

Example

References

We consider the following organizations and their members:
 StAndrewsLodge (A), LoyalNine (B), NorthCaucus (C),
 LongRoomClub (D), TeaParty (E), Bostoncommittee (F),
 LondonEnemies (G) ...

	A	B	C	D	E	F	G	...
Adams.John	0	0	1	1	0	0	0	...
Adams.Samuel	0	0	1	1	0	1	1	...
Allen.Dr	0	0	1	0	0	0	0	...
Appleton.Nathaniel	0	0	1	0	0	1	0	...
Ash.Gilbert	1	0	0	0	0	0	0	...
Austin.Benjamin	0	0	0	0	0	0	1	...
Austin.Samuel	0	0	0	0	0	0	1	...
Avery.John	0	1	0	0	0	0	1	...
Baldwin.Cyrus	0	0	0	0	0	0	1	...
	⋮	⋮	⋮	⋮	⋮	⋮	⋮	⋮

(Kieran Healy)

Adjacency Matrix

- Mr Breiger's insight was that our table of 254 rows and seven columns is an adjacency matrix, and that a bit of matrix multiplication can bring out information that is in the table but perhaps hard to see.
- Take this adjacency matrix of people and groups and transpose it—that is, flip it over on its side, so that the rows are now the columns and vice versa. Now we have two tables, or matrices, a 254×7 one showing “People by Groups” and the other a 7×254 one showing “Groups by People”.
- If you multiply out $A(AT)$, you will get a 254×254 “Person by Person”

(Kieran Healy)

Persons and Persons

The Problem

Foundations

Example

References

	(1)	(2)	(3)	(4)	...
(1) Adams.John	-	2	1	1	...
(2) Adams.Samuel	2	-	1	2	...
(3) Allen.Dr	1	1	-	1	...
(4) Appleton.Nathaniel	1	2	1	-	...
(5) Ash.Gilbert	0	0	0	0	...
(6) Austin.Benjamin	0	1	0	0	...
⋮	⋮	⋮	⋮	⋮	⋮

(Kieran Healy)

Betweenness

The Problem

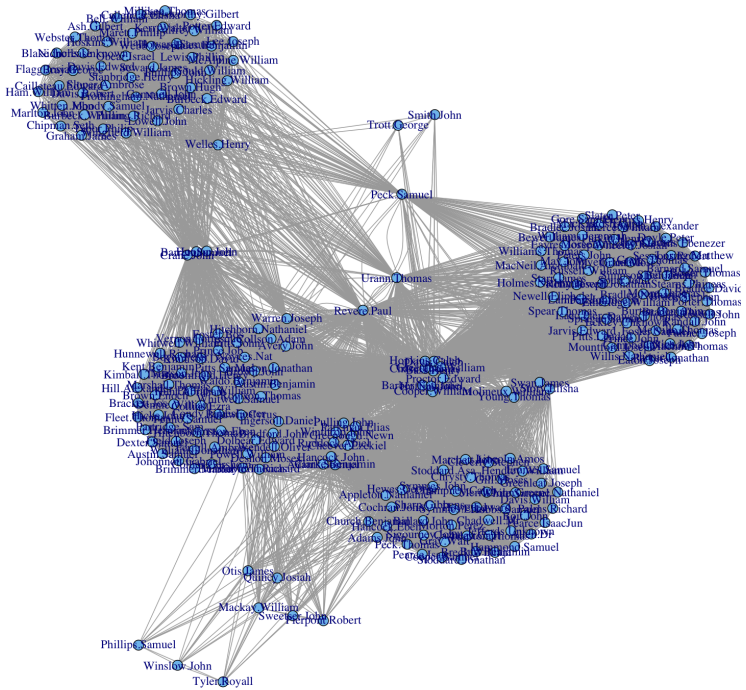
Foundations

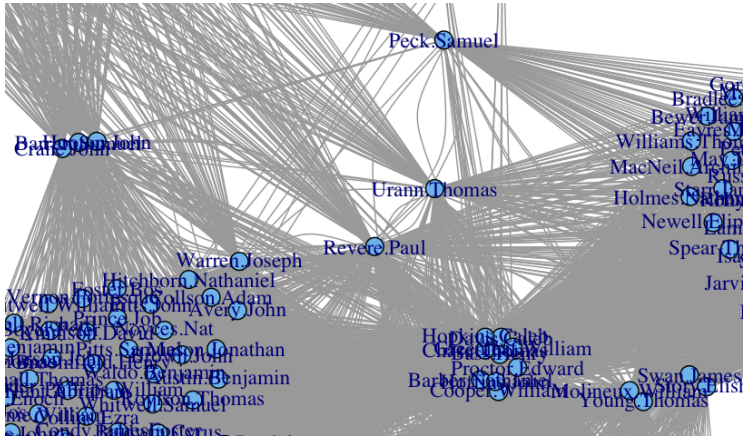
Example

References

3839	-	Revere.Paul
2185	-	Urann.Thomas
1817	-	Warren.Joseph
1150	-	Peck.Samuel
931	-	Barber.Nathaniel
931	-	Cooper.William
931	-	Hoffins.John
⋮	⋮	⋮

(Kieran Healy)





Moxie Marlinspike

The Problem

Foundations

Example

References

“If the federal government had access to every email you’ve ever written and every phone call you’ve ever made, it’s almost certain that they could find something you’ve done which violates a provision in the 27,000 pages of federal statutes or 10,000 administrative regulations. You probably do have something to hide, you just don’t know it yet.”

🗉 Moxie Marlinspike, June 12, 2013

Social Network Analysis

Jörg Cassens

Institut für Mathematik und Angewandte Informatik

Medieninformatik
WS 2017/2018



medieninformatik

IMI – Institut für
Mathematik und
Angewandte Informatik

Outline

The Problem

Foundations

Example

References

1 The Problem

2 Foundations

3 Example

4 References

- Rebekah Wegener: Ling 109 – Language, Culture and Communication. Sociocultural Contexts: social networks (Lecture Slides). Macquarie University, Sydney, Australia.
- Johannes Putzke: Social Network Analysis. Basic Concepts, Methods & Theory (Lecture Slides). University of Cologne, Germany.
- Kieran Healy: Using Metadata to Find Paul Revere. Blog Post: <http://v.gd/LM2Kr3>. June 9th, 2013.
- Moxie Marlinspike: We Should All Have Something To Hide. Blog Post: <http://v.gd/KvBIsH>. June 12th, 2013.

Recommended Reading

- Hanneman & Riddle: Introduction to Social Network Methods. Available online: <http://v.gd/vzRyXX>, 2005.
- Cory Doctorow: Little Brother. Creative Commons licensed young adult novel. Published as printed or e-book in different languages: <http://v.gd/JrRBz6>.
- Edward Snowden: Interview. YouTube-Video: <http://youtu.be/5yB3n9fu-rM>, 2013.
- heise online: “Spiegel”: BND weitert Internet-Überwachung aus. Online-News: <http://heise.de/-1889298>, 2013.